



Hearing Aid Aftercare Guide For Receiver-In-Canal (RIC) Hearing Aids

**How to care for your hearing aids
once they have been fitted**

Call us: 03303 203 413
www.sussexaudiologycentre.co.uk

PHONAK
life is on

Hearing aid aftercare RIC (Receiver-In-Canal)



Here's some information on how to care for your hearing aids once they have been fitted.

In this leaflet you will find how to clean your hearing aids, a step by step guide on how to change a wax guards, how to change your domes and some FAQs. You can find further information and some how-to videos on our website www.sussexaudiologycentre.co.uk



It is imperative that you are able to maintain and care for your hearing aids and feel comfortable providing routine maintenance. With the advice enclosed in this booklet you will ensure that your hearing aids are providing you with the best possible sound quality and fit.

Getting started

You have a RIC (Receiver-In-Canal) hearing aid which means the receiver for the hearing aid sits in the canal of the ear and the main component of the hearing aid sits behind your ear.

There are 3 main parts to your hearing aid;

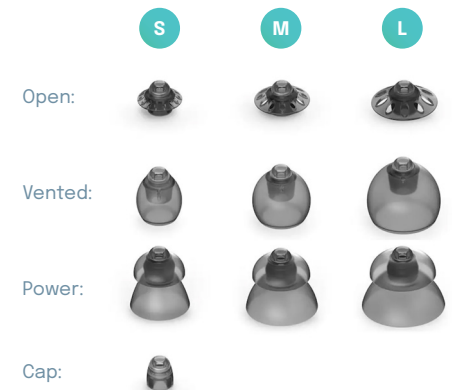


A: This is your main component of your hearing aid which houses all of the technology and the controls for volume, programme control, microphone and battery.

B: The receiver – This is tubing where the sound enters the ear

C: The domes – allowing the tip of the receiver to sit comfortably in your ear.

As you can see, there are many types of domes available. As each dome changes how you hear, your audiologist will chose the right ones for you depending on your ear canal shape and size along with your preference.



Understanding your hearing loss

Hearing loss can occur at any age. Some of the most common reasons are related to your age, exposure to noise or inherited.



Many people with hearing loss lose their higher frequencies this is due to the way the ear works. With this type of loss, you will notice you miss consonants and words will appear muffled, you may even feel that people are mumbling.

Recent research has linked age related hearing loss with dementia and late life depression. Hearing aids can help with this by stimulating your brain to hear correctly and stopping you from socially isolating.

It can sometimes take weeks or months to adjust to your hearing aids depending on the type and degree of hearing loss and the advice provided by your audiologist. We recommend wearing them as much as you can (other than sleeping, showering or swimming) allowing your brain to adjust. During this time, you may notice the aids sounding tinny, your own voice sounding strange and noises you haven't heard for a while being unusually loud eg. Kettle boiling, water running, clock ticking.



We will see you during this time to check on how you're getting on and sorting any issues there may be and to talk you through it. Don't give up!

General maintenance

Every evening you will need to wipe over your dome to ensure there is no build up of wax with the wipes we supplied, if you see any wax please remove with the brush on the end of your cleaning spray.

You might find it helpful to spray some of the cleaning spray onto the dome, then use a tissue to dry any excess spray before brushing.



↑ PureClean hearing aid cleaning spray



↑ Hearing aid cleaning wipes

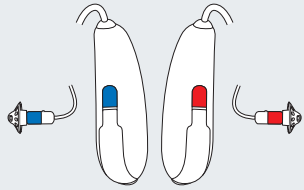
Once clean, if your hearing aids are rechargeable place in the charger and await the flashing lights, if no flashing lights within 1 minute check the charger is plugged in and the socket is turned on. If there is still no lights check there is no debris in the charger stopping the connection. Charging varies between manufacturers so please refer to the hearing aid user manual for individual information on charging.



If your hearing aids are battery operated, open the battery door to reserve the battery.

How to insert hearing aids

1



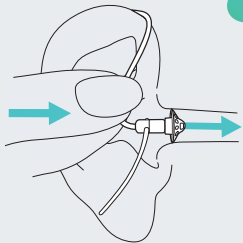
Check you have the correct side
(Blue left, Red right)

2



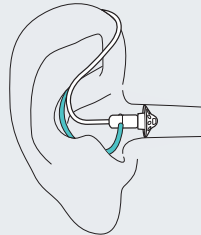
Hook the back of the hearing aid behind your ear (at the top like you would glasses)

3



Push dome into your ear and give it a wiggle

4



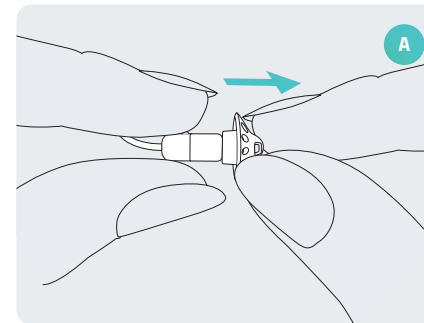
Check in mirror that there is not any hearing aid hanging out of your ear if there is please push in further (if you have a retention wire please tuck into the concha)

Wax guards

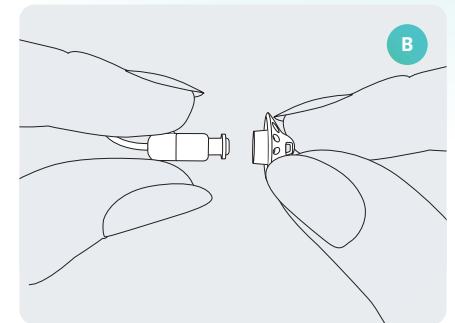
Different brands of hearing aids use different wax guards. This will explain how to change them but this will vary dependent on the type of hearing aid so please see the hearing aid user manual.

1

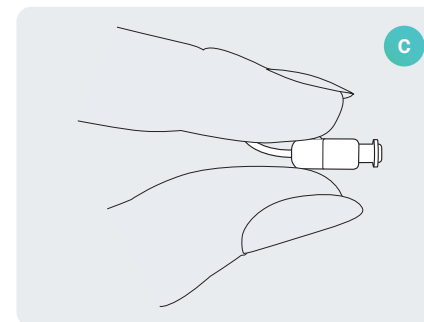
Removing the earpiece from the speaker



A: Remove the earpiece from the speaker by holding the speaker in one hand and the earpiece in the other.



B: Gently pull off the earpiece to remove.

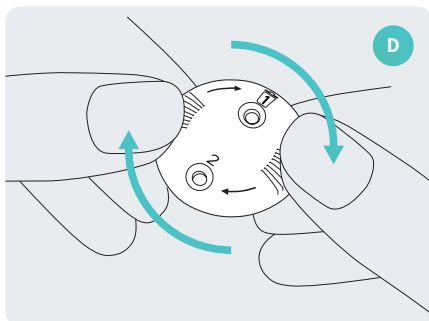


C: Clean the speaker with a lint-free cloth.

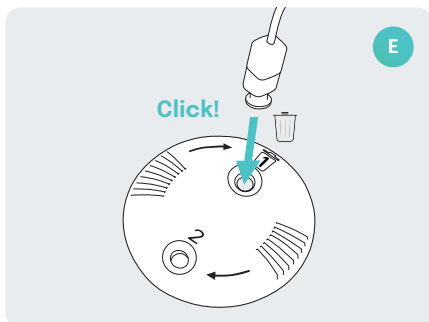


This should be done every 6-12 weeks dependent on your own wax production.

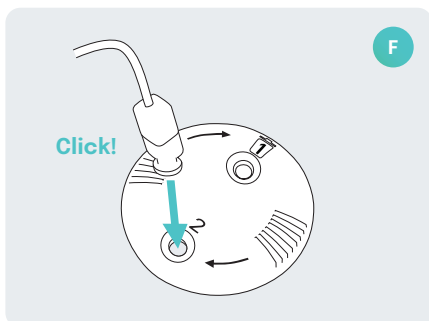
2 Exchanging the earwax protection with CeruShield™ Disk



D: Gently rotate the CeruShield Disk in the direction indicated by the arrows until a free opening appears under the bin icon.



E: To remove a used earwax protector carefully insert the speaker into the free opening (under bin icon) until it clicks. The used earwax protector will remain in the disk when you lift the speaker away.



F: To insert a new earwax protector carefully insert the speaker into the opening where the new earwax protector is visible (opposite the bin icon) until it clicks. Lift the speaker away from the disk, the new earwax protector is now positioned inside the speaker.

3 Reattach the earpiece to the speaker

Troubleshooting

? **If your hearing aid isn't working here are some things to check:**

- Check for a blockage of wax either in the dome or in the wax guard
- Make sure they are charged (if rechargeable)
- Change batteries (if non-rechargeable)
- Turn up the volume and listen for beeps
- Change hearing aid programs to check you haven't accidentally gone into loop (if applicable)

If none of these work then there may be a fault within the hearing aids, please call us to make an appointment.

? **If your hearing aids are not loud enough**

- Check you haven't accidentally gone into any hearing aid programs (if you have any)
- Check for wax in the domes or wax guards
- Have you had your ears checked for wax?
- When was your last test? Your hearing may have changed

? **My hearing aids are whistling**

- Have ears checked for a blockage of wax
- Change your domes
- Check hearing aids are inserted correctly

? **My hearing aids are tinny**

If your hearing aids are new this can be normal during the initial acclimatisation period of 2 weeks.

- Check volume hasn't been accidentally raised

What we can do to help



If these things happen things our clinicians are here to help. Please call us to arrange an appointment where we can:

- ✓ Examine your ears
- ✓ Perform a new hearing test
- ✓ Replace the hearing aid receivers
- ✓ Change the domes
- ✓ Check your hearing aids are working normally
- ✓ Increase the volume on your hearing aids and/or clarity of speech
- ✓ Run a test to ensure feedback is at a minimum

Should you have any of the below issues our staff will arrange for your hearing aid to be sent to the manufacturer for review:

- ? If your hearing aid itself is faulty
- ? If your hearing aid is only intermittently giving sound
- ? If it's cracked or broken
- ? If the Bluetooth has malfunctioned

Please call us and we will happily arrange for your hearing aid to be returned for inspection and/or repair. Please be aware there may be a cost to you.

Further help

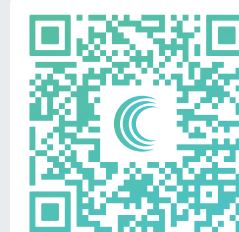
Should you have any issues with your hearing aids or your hearing, please do not hesitate in giving us a call.

Our helpful reception staff will assess whether a telephone call from an audiologist would be suitable or whether an appointment to come and see us is needed. Either way, we're here to help!



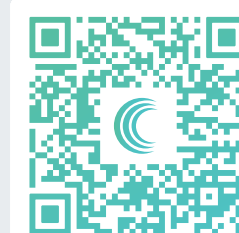
View and download a digital version of this document

↪ SCAN QR CODE



Watch our how-to videos

↪ SCAN QR CODE



Contact Us



Hove Clinic

17-19 Montefiore Road
Hove, East Sussex
BN3 1RD

Tel: 01273 778 977
hove@sussexaudiologycentre.co.uk



Goring Clinic

313 Goring Road
Goring-by-Sea, West Sussex
BN12 4NX

Tel: 01903 243 300
goring@sussexaudiologycentre.co.uk



Haywards Heath Clinic

Nuffield Health Hospital
Burrell Road, Haywards Heath
West Sussex RH16 1UD

Tel: 03303 203 413
haywardsheath@sussexaudiologycentre.co.uk



Lewes Clinic

Unit 1, Artisan House
Brooks Road, Lewes
East Sussex BN7 2YJ

Tel: 03303 203 413
lewes@sussexaudiologycentre.co.uk



Ferring Clinic

32 Ferring Road
Ferring, Worthing
West Sussex BN12 5HJ

Tel: 03303 203 413
ferring@sussexaudiologycentre.co.uk

The Sussex Audiology Centre is a family-founded and family-run business who have been proudly serving Sussex for over 25 years.

Call us: **03303 203 413**
www.sussexaudiologycentre.co.uk

PHONAK
life is on